

SCIENCE

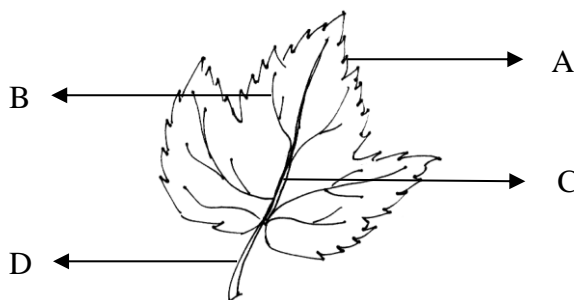
01. Which of the following is not a modified root?

- A. Carrot B. Radish C. Beetroot D. Potato

02. Which of the following has a fibrous root system?

- A. Paddy B. Mango C. China rose D. Pea

03. Study the diagram of a simple leaf given below. Which of the following shows the correct labeling of the different parts?



- | | | | |
|-------------|------------|------------|-----------|
| A. A-Edge | B-Veins | C-Midrib | D-Petiole |
| B. A-Midrib | B-Edge | C-Leaf bud | D-Veins |
| C. A-Stalk | B-Leaf bud | C-Vein | D-Midrib |
| D. A-Veins | B-Midrib | C-Leaf bud | D-Edge |

04. Identify the plant which is modified to trap insects.

- A. Venus flytrap
B. Cactus
C. Money plant
D. Cuscuta



05. One of the following is not a deficiency disease

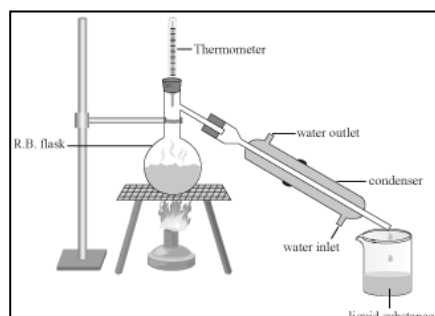
- A. Kwashiorkor B. Goitre C. Marasmus D. Typhoid

06. To increase roughage in our diet, we must consume more

- A. Chow Mein B. Fruits and Vegetables C. Pulses D. Fried food

07. Name the process shown in this figure.

- A. Filtration
B. Decantation
C. Distillation
D. Sedimentation



08. From which part of the plant are jute fibres obtained?

- A. Fruit B. Root C. Leaf D. Stem

09. The process of photosynthesis is carried out by
A. Animals B. Plants C. All living beings D. None of these

10. Name the process of separation of substances shown in the figure.

- A. Threshing
- B. Winnowing
- C. Sedimentation
- D. None of these



11. Buoyancy in hydrophytes is due to
A. Water B. Light C. Air in the body D. Temperature

12. Which of the following are the properties of light?

- I. Light travels in straight lines.
- II. Opaque bodies do not allow light to pass through them.
- III. Reflection occurs on smooth surfaces like mirrors.
- IV. Lateral inversion takes place in a plane mirror.

- A. I and II only B. I and IV only C. II and III only D. I to IV

13. Plants breathe through tiny holes called

- A. Gills B. Spiracles C. Stomata D. Scales

14. Identify a biodegradable waste from the following:

- A. Rubber B. Onion peel C. Paper D. Poly bag

15. A freely suspended magnet points in the

- A. North-West direction B. South-South direction
- C. South-West direction D. North-South direction

16. Which of these is an example of rectilinear motion?

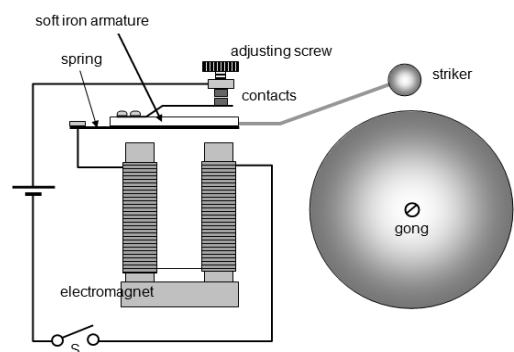
- A. Motion of a giant wheel B. Moving blades of a mixer
- C. Car moving on a straight road D. Second's hand of a clock

17. In the given electric bell, electrical energy is converted into

- A. Light energy
- B. Chemical energy
- C. Sound energy
- D. Mechanical energy

18. Deficiency of Iodine can cause

- A. Anaemia
- B. Rickets
- C. Dental cavity
- D. Goitre



19. The percentage of nitrogen in air is
A. 0.018% B. 0.93% C. 21% D. 78%
20. The handles of the tools like screw drivers and pliers used by electricians for repair work usually have plastic or rubber covers on them
A. to have a better grip B. to avoid electric shock
C. for fancy looks D. to prevent conduction of heat